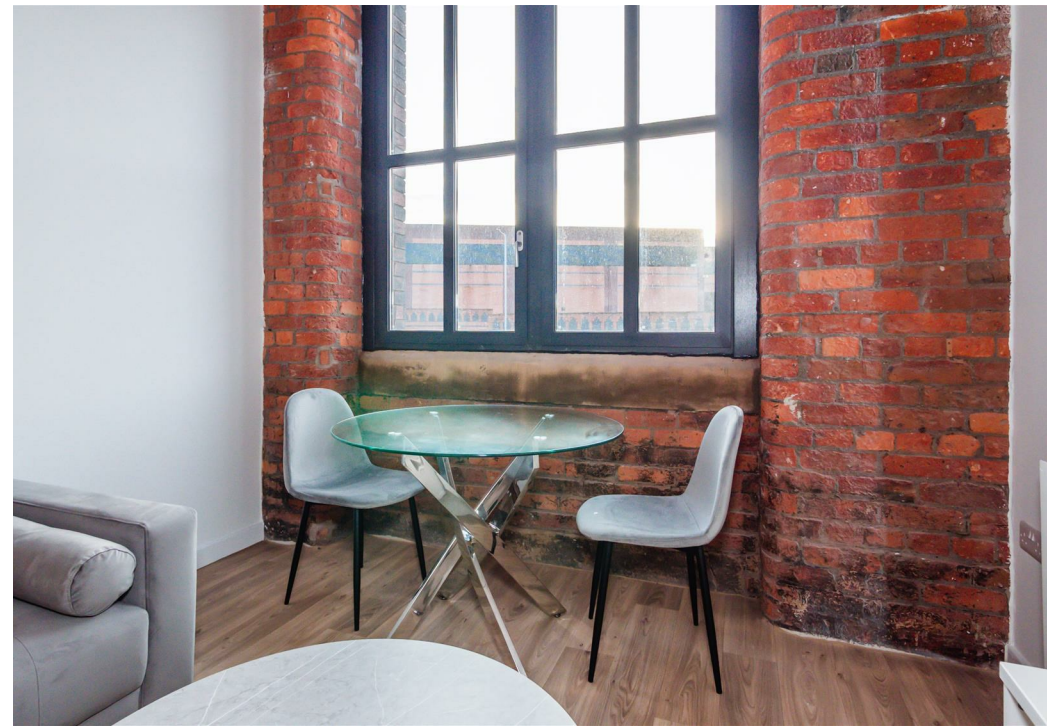
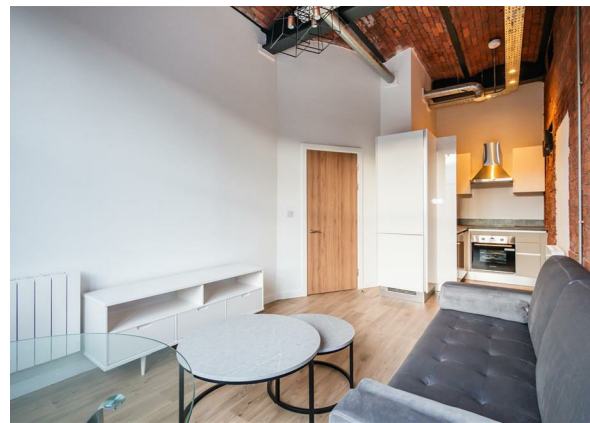
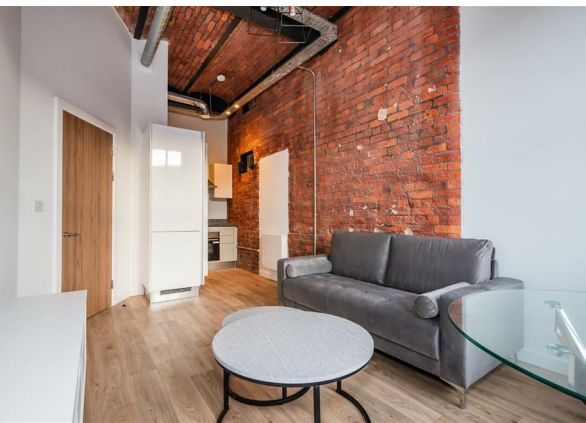
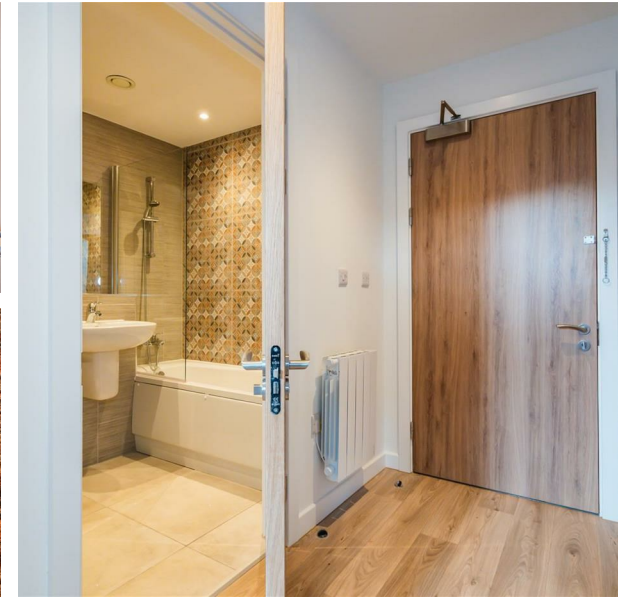
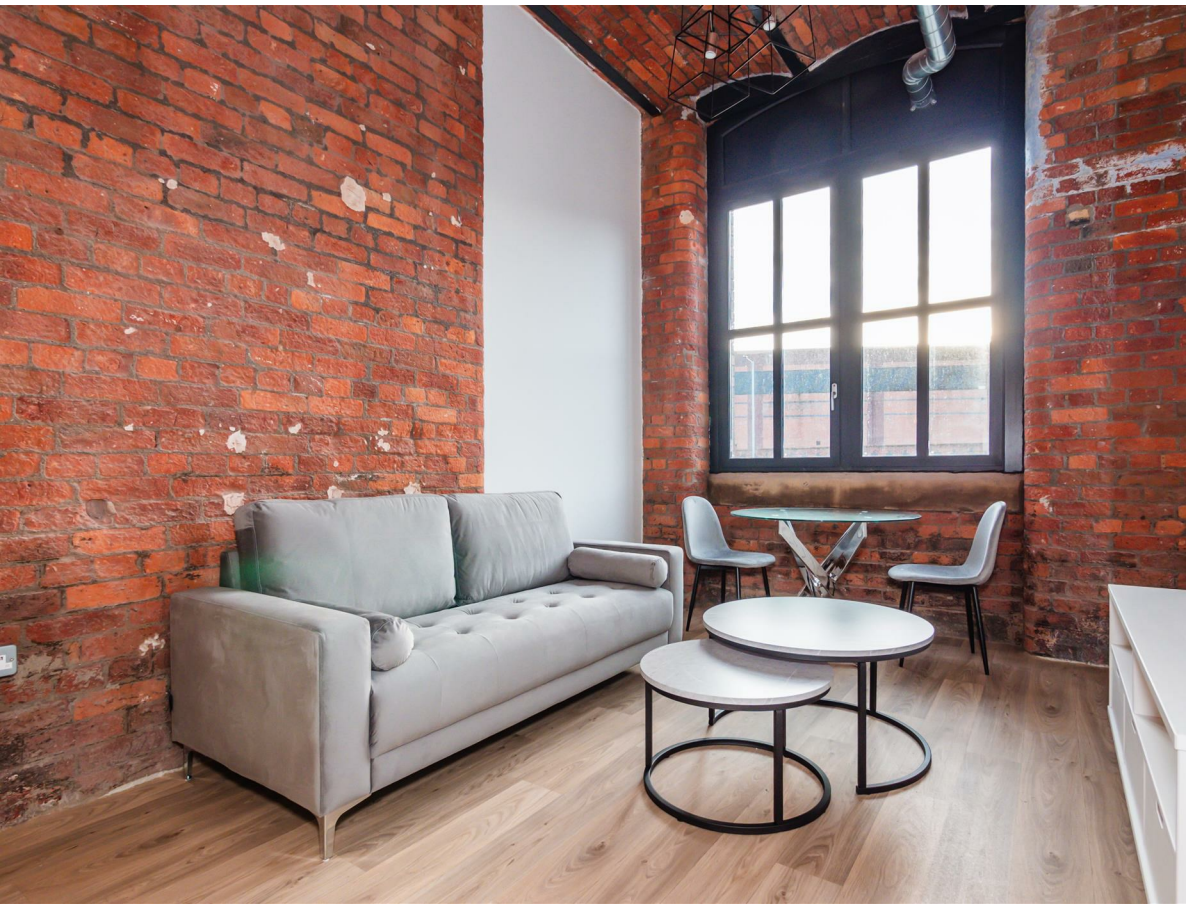


12 Redhill Street, Manchester, Greater Manchester, M4 5BA
£250,000
Council Tax Band: New Build

ORLANDO REID
— MANCHESTER —



This apartment sits within a stunning, historic mill conversion right in the heart of New Islington, with an abundance of nearby amenities & transport links. Featuring a spacious bedroom, one bathroom, and an open-plan kitchen and living area, this apartment is filled with character.

Within a 5 minute walk you'll find supermarkets, restaurants, retail spaces and even New Islington Marina.
Manchester Piccadilly Train Station is less than a 10 minute walk away, making commuting and travelling around the city, or further afield, easy.

ORLANDO REID
— M A N C H E S T E R —

St Johns Court 19b Quay Street, Manchester, M3 3HN
01616760099
manchester@orlandoreid.co.uk
<https://www.orlandoreid.co.uk/manchester/>

